



Manual

Revision E

File:	Manual_OMClient.docx
last saved:	2014-10-02 09:11

Change sheet

Audit	Alteration	Date	Processor
A	First edition	4/25/2011	TE
B	Menu File -> delete data removed	5/25/2011	TE
C	Welcome, Support	6/6/2011	TE
D	Analysis: shift report Analysis: dual rate Extended functionalities	4/16/2013	AA
E	Support and Service	10/2/2014	TE

Dear customer,

Every year thousands of customers purchase our high quality products.

With very good reason:

- Our products offer a very good price/performance ratio. Reliable quality at a fair price.
- With a professional experience of over 20 years, we are able to find the optimal solution for your measuring task.
- Our high quality standards.
- Of course, all of our equipment bears the CE mark required by the EU.
- Calibration certificates, seminars and consulting.
- After the purchase we will not leave you standing in the rain.

Our service ensures rapid assistance for you.

Table of contents

Change sheet	2
Table of contents	4
Illustration Index	5
Table Index	6
1 Introduction.....	7
2 First Start.....	7
3 General	8
3.1 Menu File	8
3.1.1 Exit	8
3.2 Menu View	8
3.3 Menu Extras	9
3.3.1 Alarm texts	9
3.3.2 E-mail recipient configuration	10
3.3.3 SMS recipient configuration	10
3.3.4 Database configuration	11
3.3.5 Client - Server communication configuration	11
3.4 Menu Info	11
3.4.1 Help	11
3.4.2 Language	11
3.4.3 About	12
4 Overview.....	12
5 Data.....	14
5.1 Diagram View	16
5.2 Statistics	18
5.3 Tabular View	19
5.4 Raw Data	20
6 Alarm	21
7 Analysis.....	23
8 Alarm Configuration.....	26
9 Support and Service	28

Illustration Index

Illustration 1: No database connection	7
Illustration 2: Database configuration	7
Illustration 3: Connetion to Server Lost	8
Illustration 4: Client Server Kommunikation	8
Illustration 5: Configuring alarm texts	9
Illustration 6: E-mail recipient	10
Illustration 7: SMS recipient	10
Illustration 8: Database configuration	11
Illustration 9: Language selection	11
Illustration 10: Draft mode overview	13
Illustration 11: Diagram Explorer	14
Illustration 12: Line Style	15
Illustration 13: Y-axis scaling	15
Illustration 14: Diagram View	16
Illustration 15: Raw data diagram	17
Illustration 16: Moving average.....	17
Illustration 17: Statistical analysis.....	18
Illustration 18: Tabular View	19
Illustration 19: Raw Data	20
Illustration 20: Chronological sorting ascending.....	20
Illustration 21: Filters - Value Name Temp	21
Illustration 22: Grouping Name Value	21
Illustration 23: Export	22
Illustration 24: "Duration" sorting, ascending.....	22
Illustration 25: Filters - Timeset from April 18, 2011	22
Illustration 26: Grouping AreaName, DeviceName, ValueName	23
Illustration 27: Consumption Analysis	23
Illustration 28: Consumption Analysis	25
Illustration 29: Device context menu alarm configuration.....	26
Illustration 30: Diagram Explorer Alarm Configuration	26
Illustration 31: Alarm configuration, pre-alarm - main-alarm	27
Illustration 32: Alarm configuration, lower/upper limit.....	27

Table Index

Table 1: Background image.....	12
Table 2: Editing Overview.....	12
Table 3: Overviews	14

1 Introduction

With the help of OMClient, the stored measurement values can be visualized and evaluated.

2 First Start

- The first time the application is started a notice will be displayed, stating that a connection to the database cannot be established.

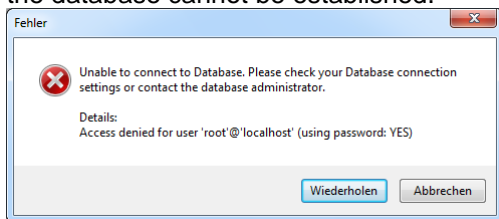


Illustration 1: No database connection

- By pressing the "Retry" button the "database configuration" dialogue is automatically opened.
- The dialogue "database configuration" is filled with the standard parameters for the MySQL database.
- Now you can change the parameters for the MySQL database:

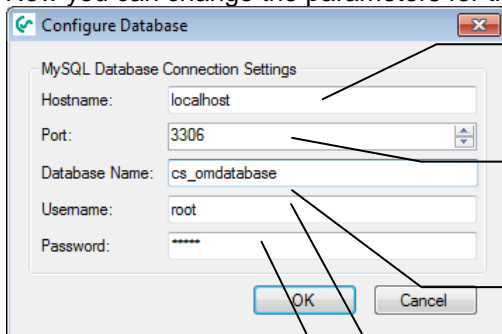


Illustration 2: Database configuration

- Name/IP address of the computer where the MySQL database is installed.
- Port of the MySQL database (default: 3306 - see Install Guide p. 11)
- Name of the database (default: cs_omdatabase - see Install Guide p. 13)
- Database User: root
- Password for the database access (see the Install Guide, p. 13 (default: CS_DB))

- The dialog for the configuration of the MySQL database connection can be called up at any time via the menu item "Extras -> Database configuration".
- After correctly entering the database configuration the logon dialog will appear. Enter the correct login credentials. The credentials were established with the help of OMServerGUI (see Manual CS Soft Online Monitoring ServerGUI p. 14)
- Subsequently a message will appear stating that a connection to the OMServer can not be established:

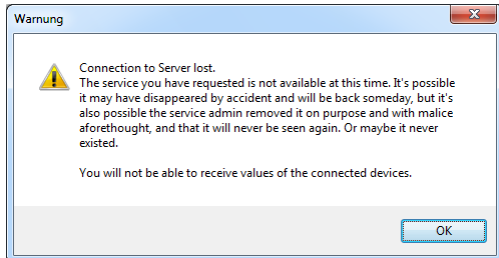


Illustration 3: Connection to Server Lost

- Acknowledge the warning by clicking "OK".
- After this the dialogue „Client Server Communication“ appears. The dialogue is filled with the standard parameters for the Client – Server – Communication.
- Now you can change the parameters for the Client – Server – Communication:

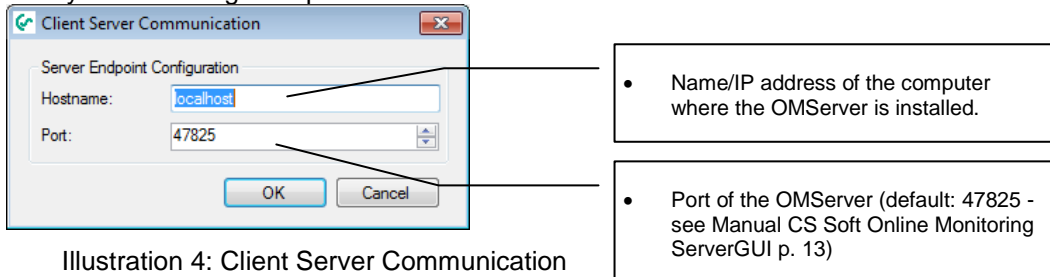


Illustration 4: Client Server Communication

- Subsequently restart OMClient.

3 General

Here, the menu items are described that have the same functionality in all views.

3.1 Menu File

3.1.1 Exit

Exit the OMClient.

3.2 Menu View

- This menu can be used to switch through the different views.

3.3 Menu Extras

3.3.1 Alarm texts

- With this menu item the mask to define the alarm texts is displayed.
- The alarm texts can also be defined with the OMServerGUI.
- To be able to define alarm texts the user must at least have a level 3 access authorization.
- The AlarmId (alarmTextID) is assigned by the software.
- The alarm texts can also be defined in different languages.
- A further language can be added with the button "add language".

alarmTextID	en	de
1	1 - Error	1 - Fehler
2	Value doesn't match 'Ctd'	Wert unsinnig für 'Ctd'
3	Alarm: Flow too big!	Alarm: Durchfluss zu ...

- Add alarm text in the selected language (highlighted column).
- Edit alarm text in the selected language (highlighted column).
- Delete selected alarm texts in all languages.
- Edit alarm text.
- Add additional language.
- Accept change.
- Reset change.

Illustration 5: Configuring alarm texts

- Authorization - changes can be made by others.
- Alarm text editing - the current mask is locked for other users.

3.3.2 E-mail recipient configuration

- The e-mail recipients can be defined in the following mask.

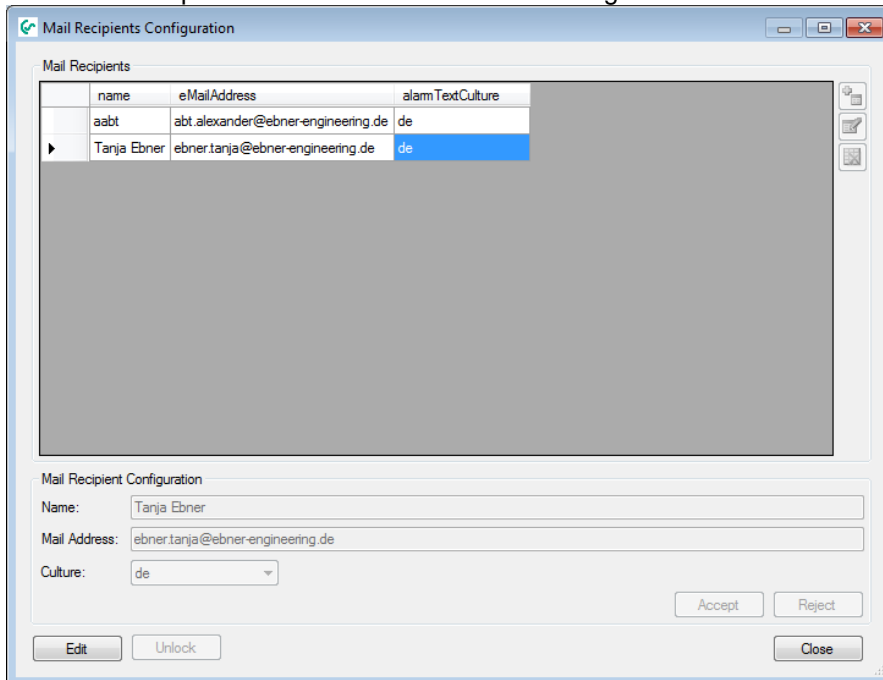


Illustration 6: E-mail recipient

- The "Edit" button must be clicked to enable editing. It is checked whether the current mask is already being edited by another user. If so, no changes can be made. If not, the current mask will be authorized for the current user and locked for all other users.
- A language can be assigned to each user. The alerts will be sent in the specified language.

3.3.3 SMS recipient configuration

- The SMS recipients are defined in the following mask:

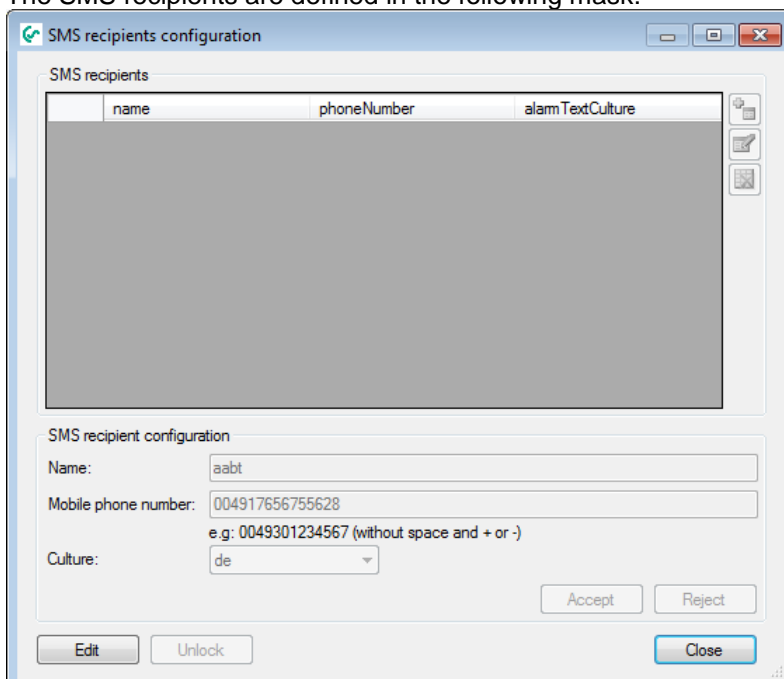
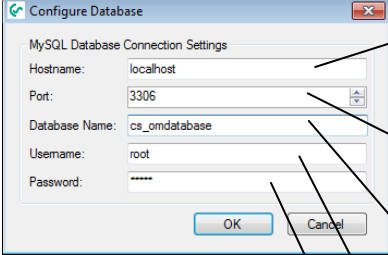


Illustration 7: SMS recipient

- The "Edit" button must be clicked to enable editing. It is checked whether the current mask is already being edited by another user. If so, no changes can be made. If not, the current mask will be authorized for the current user and locked for all other users.
- A language can be assigned to each user. The alerts will be sent in the specified language.

3.3.4 Database configuration

- In this dialog, the correct parameters for the MySQL database must be entered:



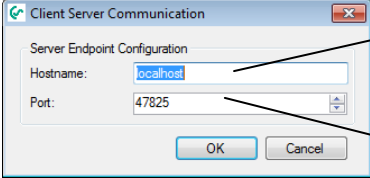
The screenshot shows the 'Configure Database' dialog box with the following fields: Hostname (localhost), Port (3306), Database Name (cs_omdatabase), Username (root), and Password (masked with asterisks). Callout boxes on the right point to these fields with the following descriptions:

- Name/IP address of the computer where the MySQL database is installed.
- Port of the MySQL database (default: 3306 - see Install Guide p. 11)
- Name of the database (default: cs_omdatabase - see Install Guide p. 13)
- Database User: root
- Password for the database access (see the Install Guide, p. 13 (default: C.S. DB))

Illustration 8: Database configuration

3.3.5 Client - Server communication configuration

- In this dialogue, the correct parameters for the OMServer must be entered:



The screenshot shows the 'Client Server Communication' dialog box with the following fields: Hostname (localhost) and Port (47825). Callout boxes on the right point to these fields with the following descriptions:

- Name/IP address of the computer where the OMServer is installed.
- Port of the OMServer (default: 47825 - see Manual CS Soft Online Monitoring ServerGUI p. 13)

3.4 Menu Info

3.4.1 Help

- Calls up the Help file (PDF File).

3.4.2 Language

- A dialog for the language selection will be opened:

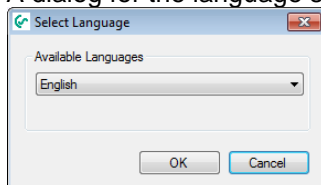


Illustration 9: Language selection

- The combo box will display all the languages available.
- Restart the application, if there are problems with the display after switching the language.

3.4.3 About

- The current version information will be displayed.

4 Overview

- After the start the "Overview" screen will always be displayed.
- If you are in another view, you can always switch back to the overview through the menu item "View -> Overview".
- This screen can be freely configured by the user.
- Background image:
When using a background image, the devices can be positioned on the entire background image - otherwise on the entire screen.



Menu item	Toolbar	Action
Edit -> Wallpaper -> Add		Adding a background image
Edit -> Wallpaper -> Delete		Deleting a background image

Table 1: Background image

- In the draft mode, devices can be added to the surface and positioned freely. The current measured values are displayed in the device window. An upcoming alarm or incorrect values are highlighted in red.



Menu item	Toolbar	Action
Edit -> Draft		Draft mode on/off
Edit -> Add device		Dialog for adding a device is opened. Double-click on the desired device to add it.

Table 2: Editing Overview

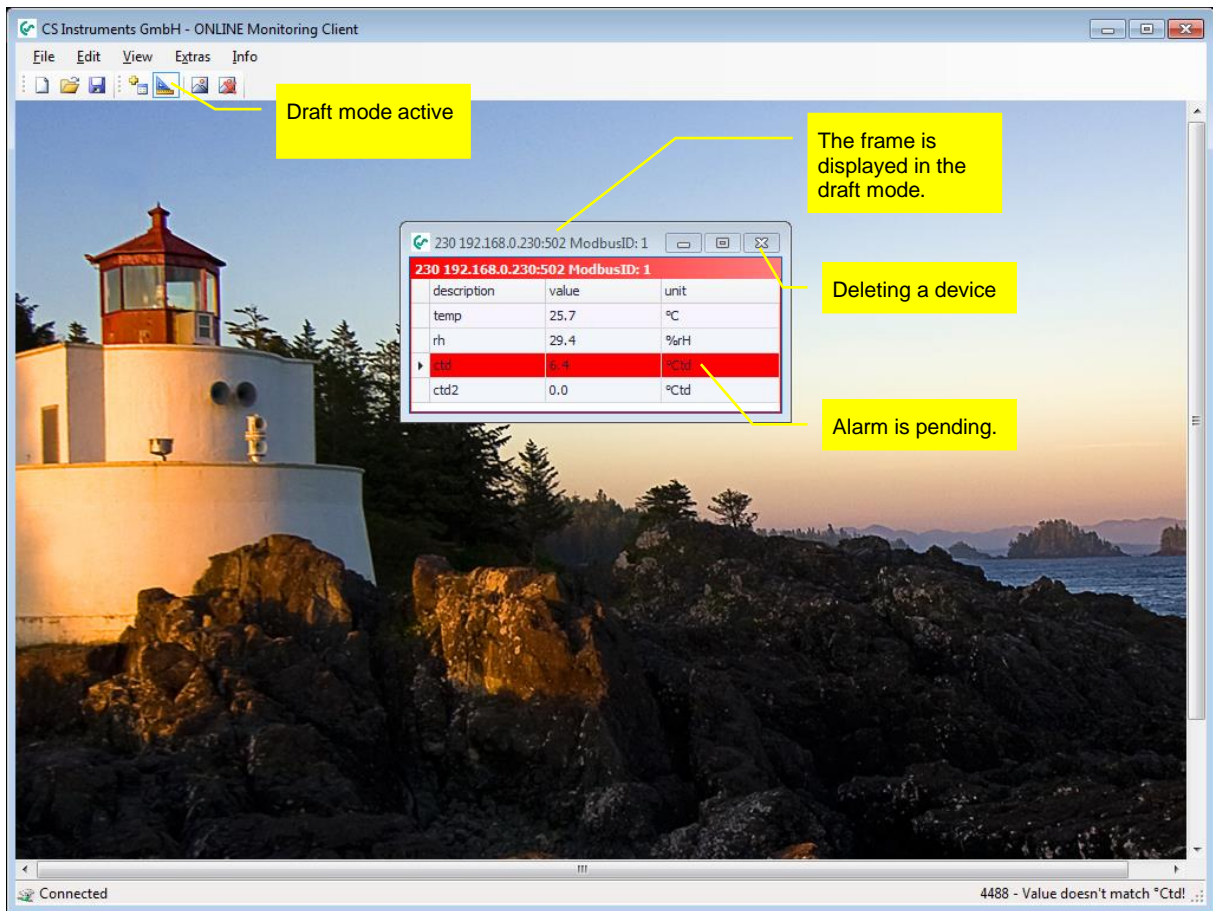


Illustration 10: Draft mode overview

- The current overview will be saved automatically when you exit and loaded the next time the software is started.
- As many overviews as desired can be saved.





Menu item	Toolbar	Action
File -> New		Creating a new overview. If the current view was not saved in a file, the data will be lost.
File -> Open		The dialog "Open file" with a filter for overview files ("*.cssh") will be opened.
File -> Save		The currently selected file is saved. If no file is currently in use, the dialog "Save as ..." will automatically open.
File -> Save as		The dialog "Save as ..." will open. When overview file are saved the file extension "*.cssh" is used.

Table 3: Overviews

- Using the context menu, the following actions can be performed:
 - Graphical display of all measured values of the selected device within the selected time range.
 - Alarm configuration for the selected measured value (see 8 Alarm Configuration).

5 Data

- The menu item "View -> Data" switches to the data view.
- A switching to the data view is also possible through the device context menu.
- In the Diagram Explorer, all areas are listed to which the current user has access. The devices are structured as a tree diagram (area, device, measured value).
- With the Chart Explorer data rows can be added or deleted by double-clicking on the appropriate measurement value.
- Data rows can also be added/deleted through the context menu.

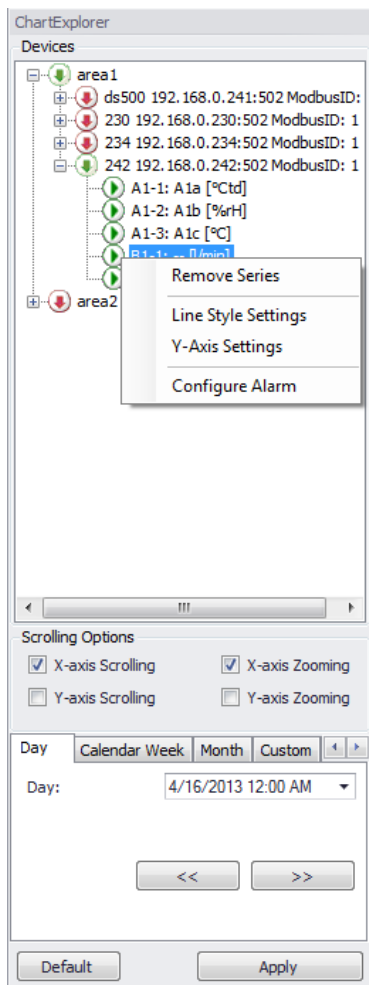


Illustration 11: Diagram Explorer

- The line style can be changed via the context menu:

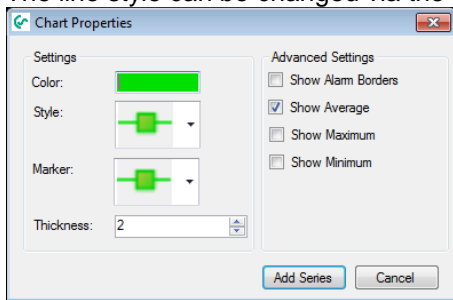


Illustration 12: Line Style

- In addition, the setting of the Y-axis is changed via the context menu. An Y-axis is added for each measured variable.

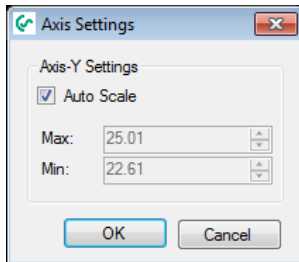


Illustration 13: Y-axis scaling

- The alarm configuration can also be started from the context menu (see 8 Alarm Configuration).
- Depending on the selection of the TabControl in the Diagram Explorer, a different data field is loaded. The data is read optimized from the database (grouping of data - the maximum number of possible data points (screen width)). With the button "<<" or ">>" the same time span before or after is read from the database.
- Using "Default" the range is set to the maximum range.
- The Diagram Explorer can be docked to the left or right, or used as a floating window (Windows standard).

5.1 Diagram View

- In the diagram view, the selected area is presented graphically:

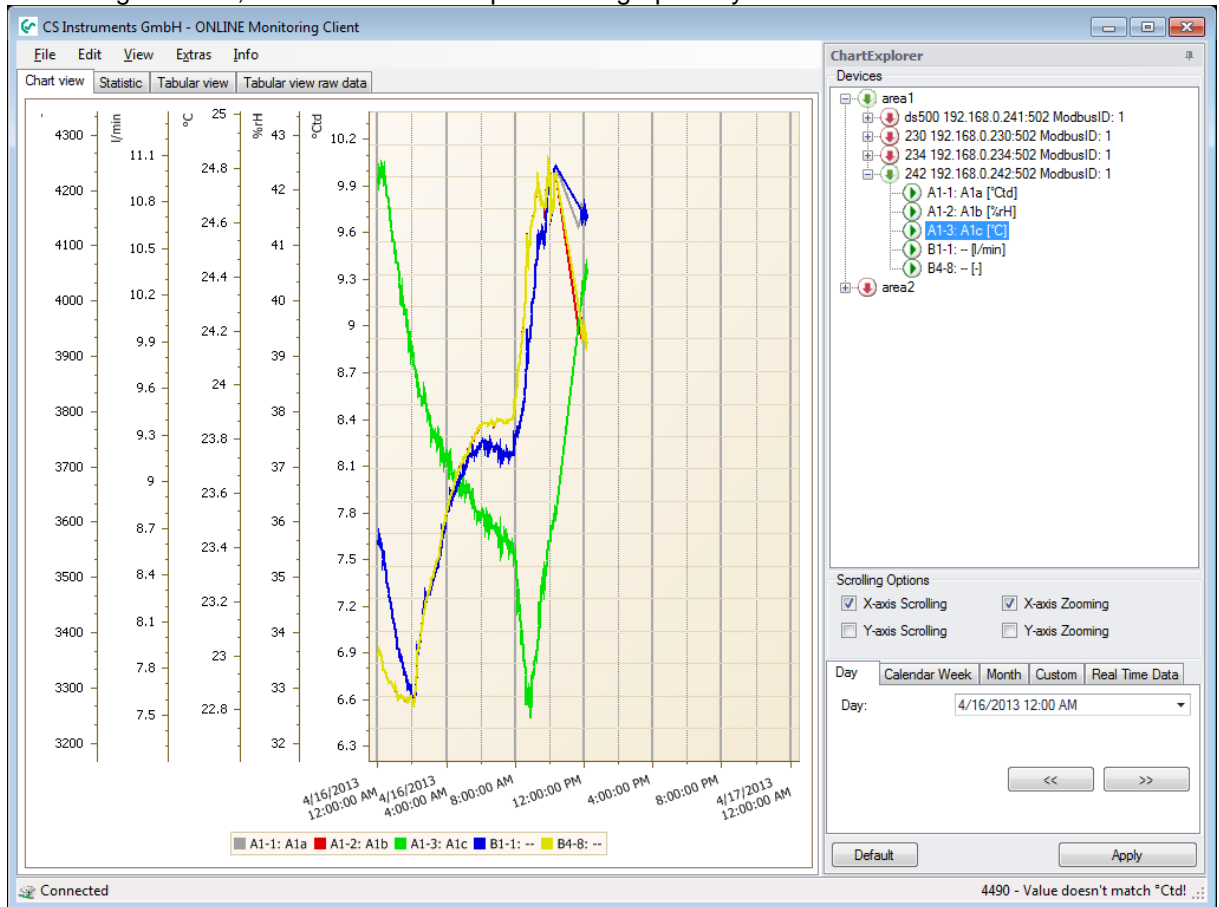


Illustration 14: Diagram View

- Zoom**
Depending on the selection in the Diagram Explorer the X-axis (X-axis zoom) and/or Y-axis (Y-axis zoom) can be enlarged or reduced by using the scroll wheel. The selection can also be made via the context menu.

By pressing the Shift key and selecting the desired range, the selected area is enlarged.

By pressing the shift key and clicking an enlargement by one increment will be made.

Pressing the ALT key and clicking will effect a reduction.

Pressing the STRG key and +-key will lead to an enlargement by one increment.
Pressing the STRG key and – key will lead to a reduction by one increment.
- Measuring points:**
If the data does not have to be grouped for displaying, the raw data will be shown. The

measured value will be output in the tooltip.

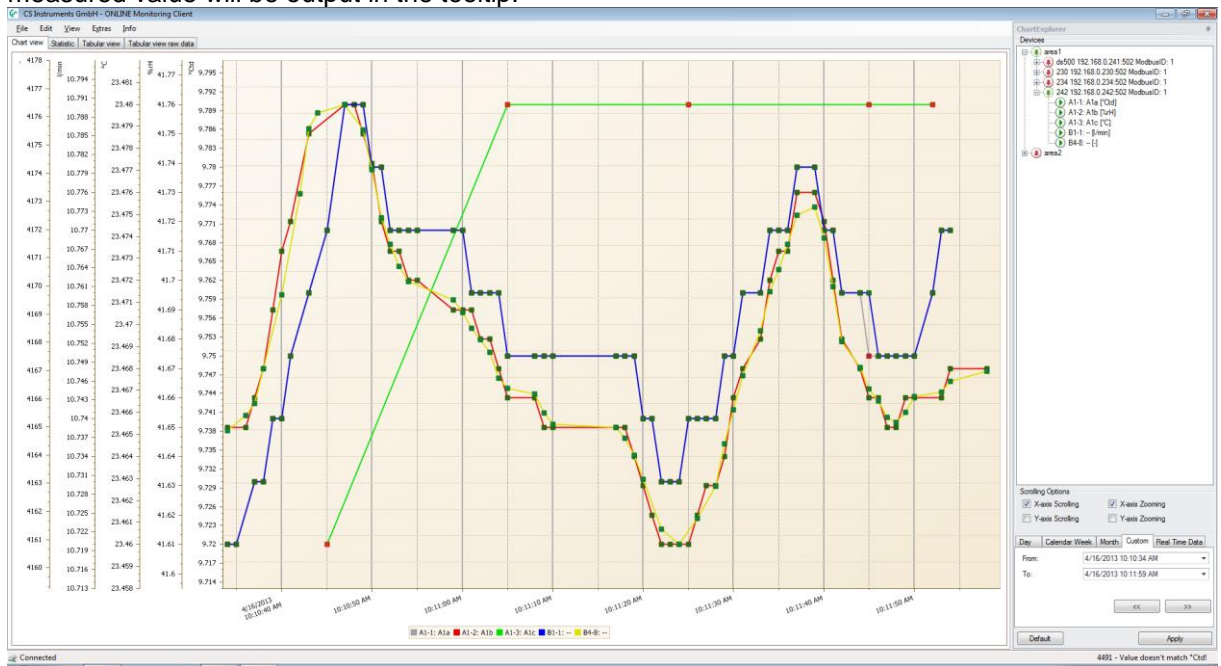


Illustration 15: Raw data diagram

- **Scrolling:**
Depending on the selection in the Diagram Explorer a scrolling is carried out along the x-axis (X-axis scrolling) and/or the Y-axis. The selection can also be made via the context menu. Hold down the left mouse button for scrolling.
- **Reset Y-scaling:**
Using the context menu "Zoom -> Reset Y-Axis scaling" all Y-axes are reset to auto scaling.
- **Data reloading:**
After zooming, you can use the context menu "Accept current time range" to load the maximum amount of data for the selected area.
- **Moving average:**
Using the context menu or the menu "Edit -> Moving average -> Display" the moving average can be displayed/suppressed. The moving average can be configured via the menu "Edit -> Preferences -> Moving average".

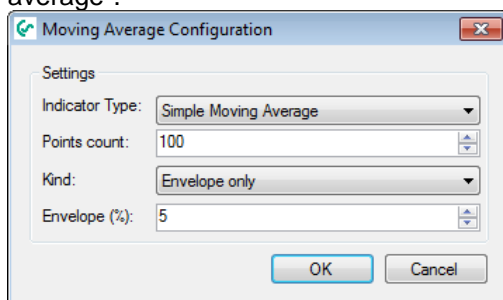


Illustration 16: Moving average

- **Export:**
The current diagram can be printed or exported as various types of documents (PDF, HTML, MHT, Rich Text, Excel, CSV, Text, graphically) via the context menu "Export ..." or the menu "File -> Export ...".

The chart diagram can be exported in the following formats:

- Hourly: One chart diagram per hour.
- Daily: One chart diagram per day.

- c) Weekly: One chart diagram per week.
Selected timespan: print of current chart diagram.

- Real-time data:
The current data can be recorded by activating the tab "real-time data" in the Diagram Explorer. The maximum time frame to be displayed is specified in seconds.
- Saving:
The current settings (line style, time range ...) can be saved via the menu "File -> Save" and reloaded at a later point in time. Please note that the data is not stored in the file, but loaded from the database when the file is opened. When the diagram data is saved the file extension ".csch" is used.

5.2 Statistics

- The loaded data will be analyzed statistically, and can be displayed through the tab "Statistics".

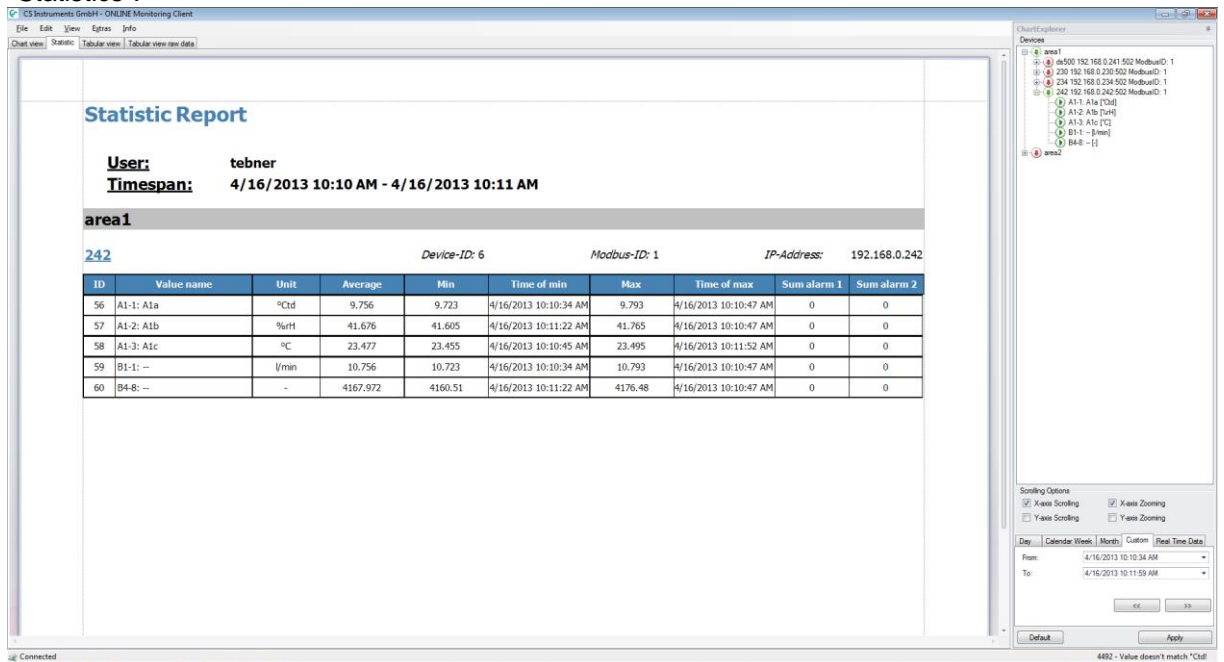


Illustration 17: Statistical analysis

- With the context menu or the menu "File -> Export ..." the statistical analysis can be output with or without graphics.

5.3 Tabular View

- The loaded data will be output in a tabular form and can be displayed through the tab "Tabular view".

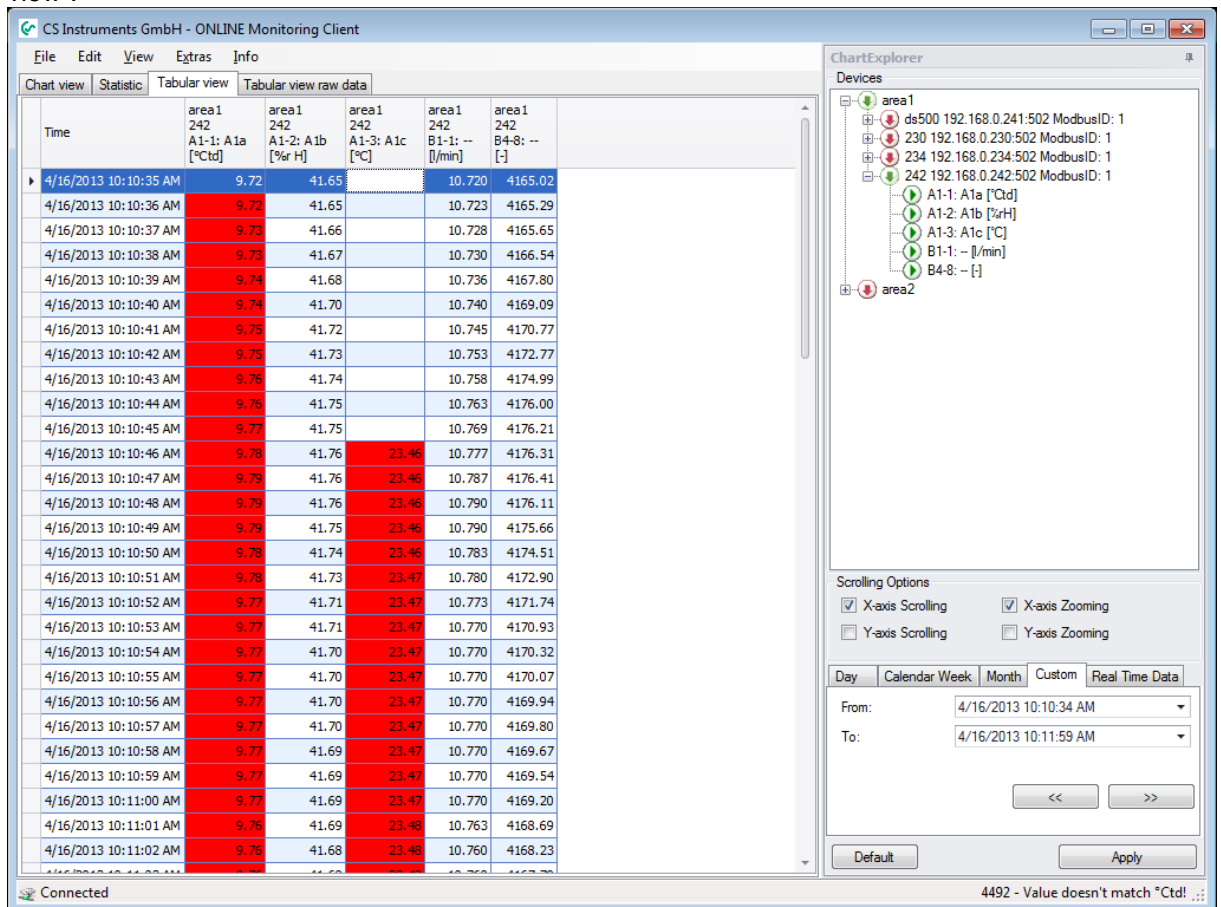


Illustration 18: Tabular View

- If an area within a table is marked, you can use the context menu "Accept current time frame" to reload the current data range.
- The tabular view can be output through the context menu "Export ..." or via "File -> Export ...".

5.4 Raw Data

- In the tab "raw data" the raw data of the database is output for the selected measurement values. If the number of data > width of the chart the grouped data will be output, otherwise the raw data.

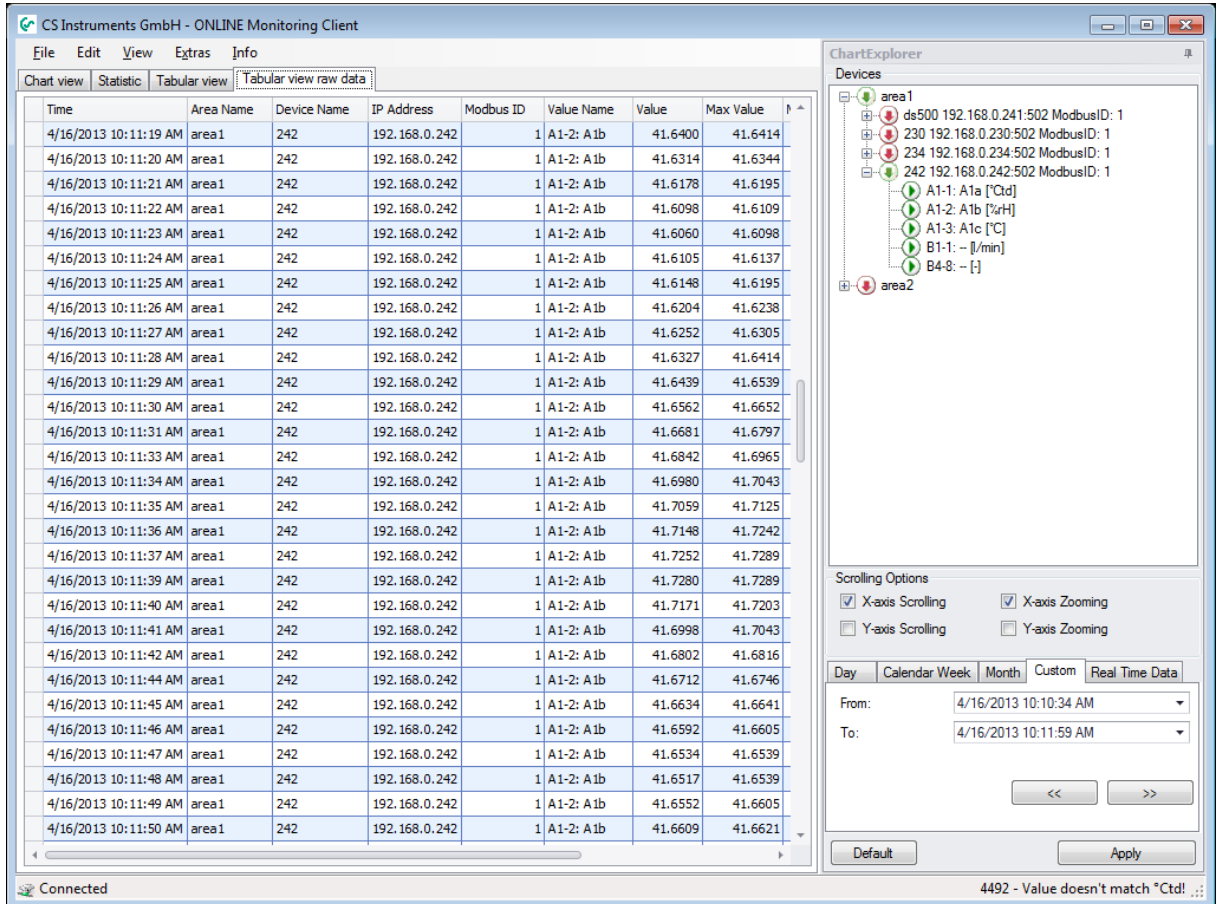


Illustration 19: Raw Data

- The raw data can be output through the context menu "Export ..." or via "File -> Export ...".
- With the context menu of the table heading the raw data can be output:

a) sorted:

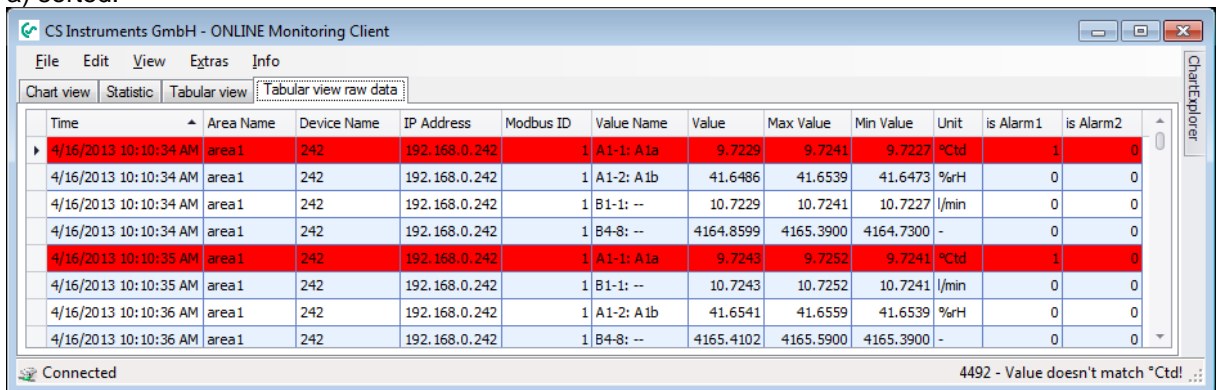


Illustration 20: Chronological sorting ascending

b) filtered:

Time	Area Name	Device Name	IP Address	Modbus ID	Value Name	Value	Max Value	Min Value	Unit	is Alarm 1	is Alarm 2
4/16/2013 10:10:34 AM	area1	242	192.168.0.242	1	A1-2: A1b	41.6486	41.6539	41.6473	%rH	0	0
4/16/2013 10:10:36 AM	area1	242	192.168.0.242	1	A1-2: A1b	41.6541	41.6559	41.6539	%rH	0	0
4/16/2013 10:10:37 AM	area1	242	192.168.0.242	1	A1-2: A1b	41.6583	41.6680	41.6559	%rH	0	0
4/16/2013 10:10:38 AM	area1	242	192.168.0.242	1	A1-2: A1b	41.6707	41.6816	41.6680	%rH	0	0
4/16/2013 10:10:39 AM	area1	242	192.168.0.242	1	A1-2: A1b	41.6862	41.7043	41.6816	%rH	0	0
4/16/2013 10:10:40 AM	area1	242	192.168.0.242	1	A1-2: A1b	41.7075	41.7203	41.7043	%rH	0	0
4/16/2013 10:10:41 AM	area1	242	192.168.0.242	1	A1-2: A1b	41.7234	41.7359	41.7203	%rH	0	0

Illustration 21: Filters - Value Name A1-2: A1b

c) grouped:

Time	Area Name	Device Name	IP Address	Modbus ID	Value	Max Value	Min Value	Unit	is Alarm 1	is Alarm 2
Value Name: A1-1: A1a										
Value Name: A1-2: A1b										
Value Name: A1-3: A1c										
Value Name: B1-1: --										
Value Name: B4-B: --										
4/16/2013 12:00...	area1	242	192.168.0.242	1	3356.2483	3357.0700	3354.7300	-	0	0
4/16/2013 12:00...	area1	242	192.168.0.242	1	3363.8148	3372.0300	3356.0900	-	0	0
4/16/2013 12:01...	area1	242	192.168.0.242	1	3367.8250	3371.7200	3361.1300	-	0	0
4/16/2013 12:02...	area1	242	192.168.0.242	1	3360.3261	3365.3100	3356.6800	-	0	0
4/16/2013 12:02...	area1	242	192.168.0.242	1	3367.2170	3368.0100	3365.3100	-	0	0

Illustration 22: Grouping Name Value

6 Alarm

- Via the menu item "View -> Alarm", the alarm window is opened.
- In the tab "Current Alarms" the current alarms are displayed.
- Each alarm must be acknowledged. The acknowledgment is performed by clicking on the desired alarm and a subsequent acknowledging via the context menu.
- Alarms that are no longer active and have been acknowledged will be moved to the alarm history. The alarm history can be opened from the tab "Alarm History".
- In the alarm history the last 2000 entries are stored.
- The server errors can be viewed from any OMClient via the tab "Server Messages". Here, the last 2000 entries are stored, which occurred on the server side (OMServer).

- Via the menu item "File -> Export ..." the current view can be exported.

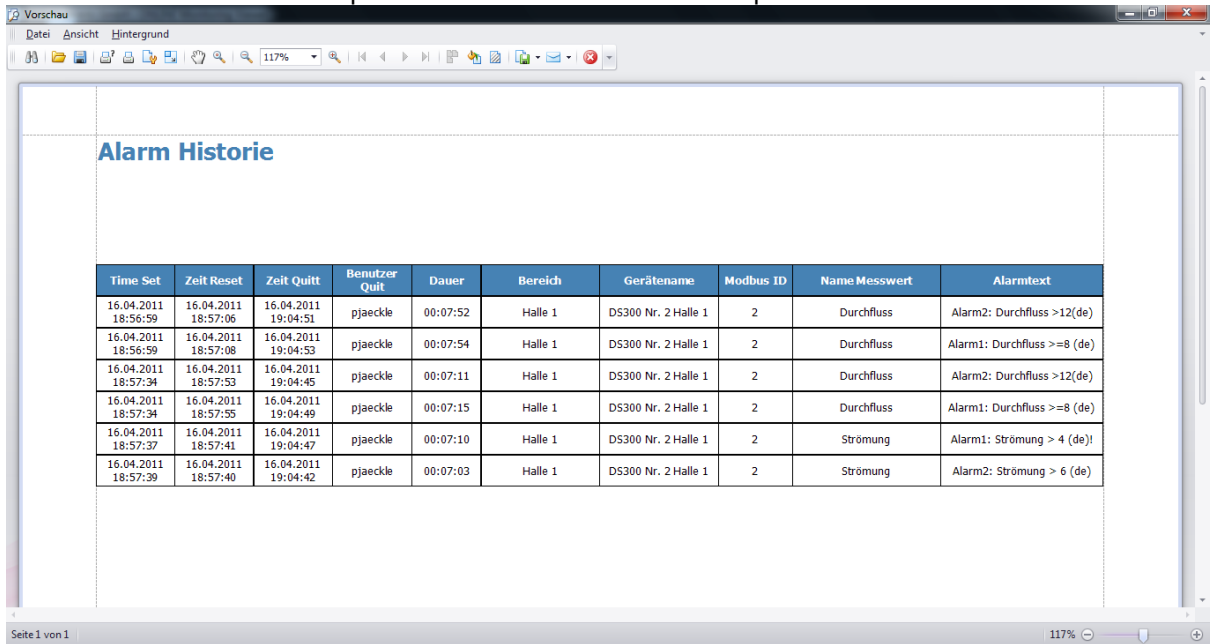


Illustration 23: Export

- The preview can be printed or exported as various types of documents (PDF, HTML, MHT, Rich Text, Excel, CSV, Text, graphically) via the menu "Export ...".
- With the context menu of the table heading the tabular view can be:
 - a) sorted

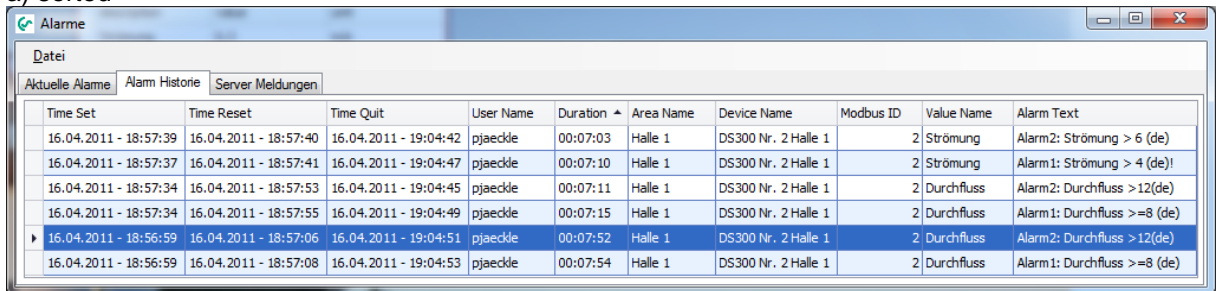


Illustration 24: "Duration" sorting, ascending

b) filtered

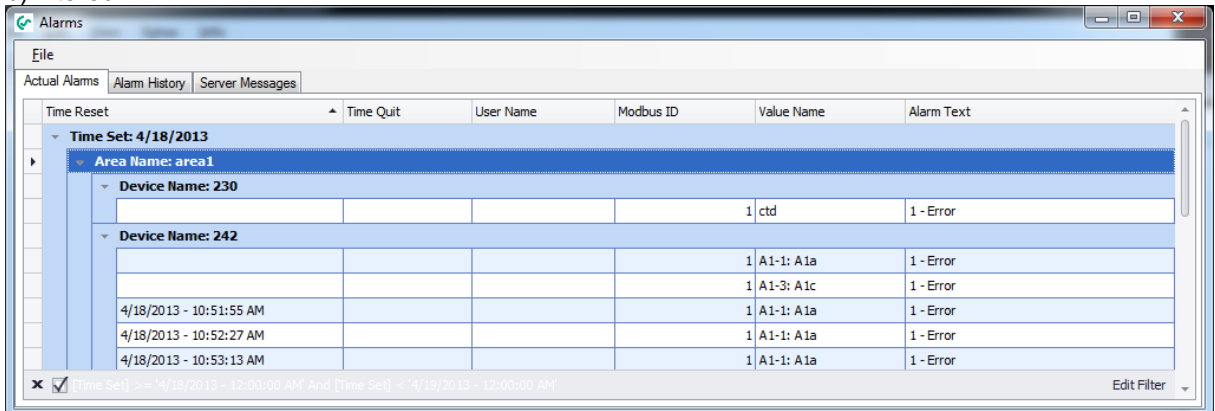


Illustration 25: Filters - Timeset from April 18, 2011

c) grouped

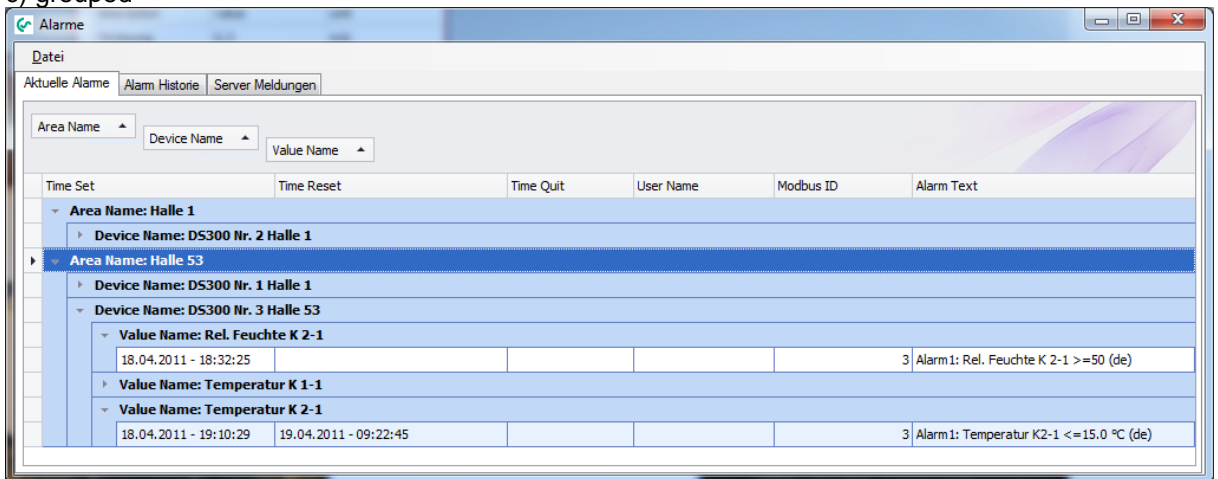


Illustration 26: Grouping AreaName, DeviceName, ValueName

Thus, enabling a detailed analysis of the alarms.

7 Analysis

- The menu item "View -> analysis" initiates the consumption analysis.

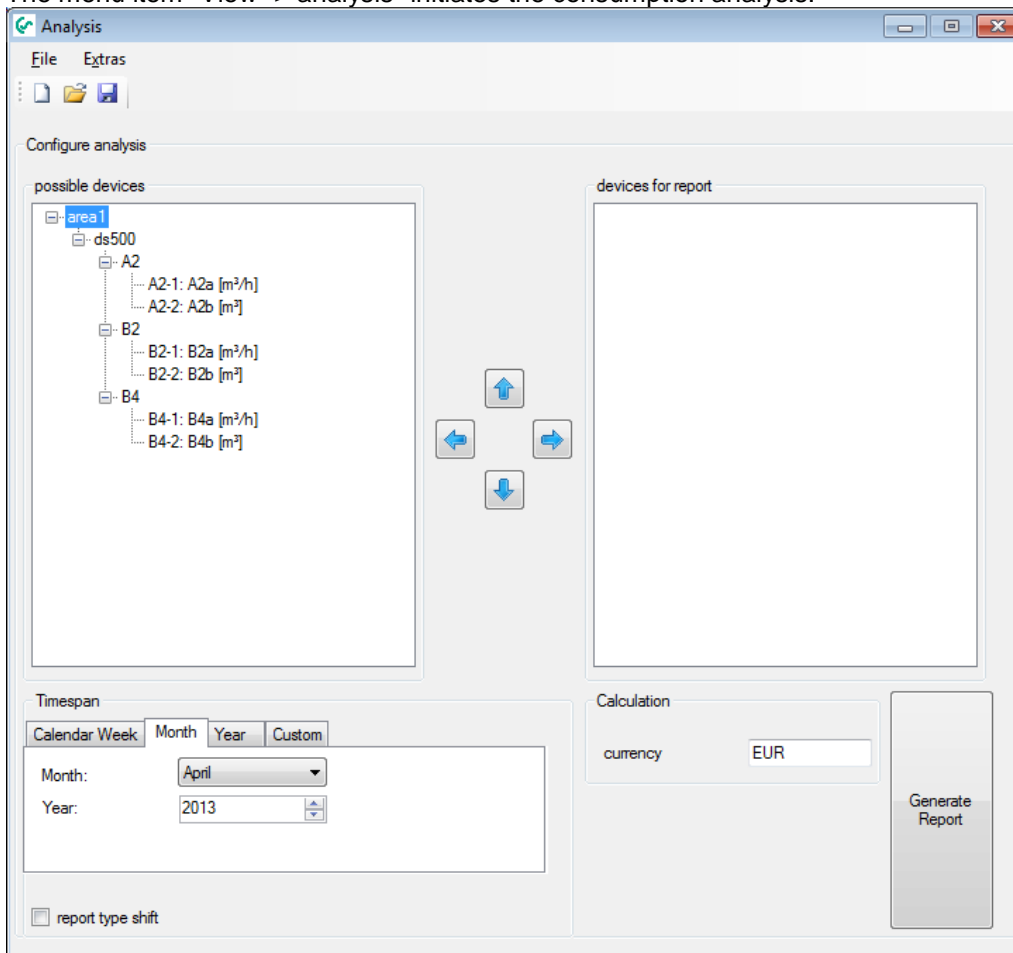


Illustration 27: Consumption Analysis

- The left pane lists all devices with consumption sensors, which are not considered in the consumption analysis.
- The right pane lists all devices with consumption sensors, which are considered in the consumption analysis.
- With a double-click complete fields or only individual devices or channels can be moved from left to right or right to left.
The selected area/unit/measuring channel can also be marked and moved with the "left arrow" or "right arrow" buttons.
- The order of the areas, devices and measurement channels can also be defined. For this, use the "up arrow" and "down arrow" buttons.
- Please note, that in order to execute a correct overall calculation devices that are included in a main or subtotal may not be considered.
- The configuration can be saved through the menu "File -> Save" or via the appropriate icon. A saved configuration can be loaded at a later point in time can via "File -> Open". The file extension "*. csua" is used for the configuration files of the consumption analysis. The menu "File -> New" enables the creation of a new configuration.
- Through the menu item "Extras->Config->Price" a price per unit as well as the rate selection/rate definition can be defined for every consumption channel.

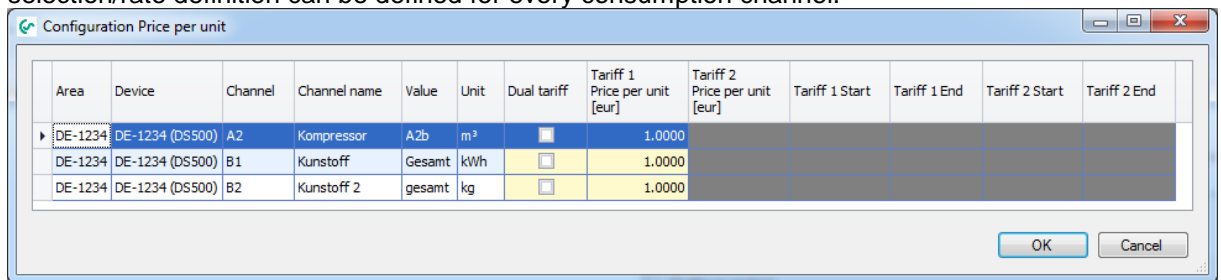


Illustration 1: Consumption Analysis configuration

- Up to 5 shifts can be defined via the menu point „Extras->Config->shift work“. The shifts have to be carried out within one day and are not allowed to overlap, otherwise there will be an error message when confirming the input with the „OK“ button.
The starting point of the first shift is allocated to the current day or the following day via the list field „Allocation of the shift start 1 to“.

Example:

<u>Example 1</u>	<u>Example 2</u>
Start of shift: 22:00 h End of shift: 6:00 h Allocation: next day	Start of shift: 22:00 h End of shift: 6:00 h Allocation: actual day
If the first shift e. g. starts on Sunday at 22:00 h and ends on Monday at 6:00 h the shift in this example will be allocated to Monday.	If the first shift e. g. starts on Sunday at 22:00 h and ends on Monday at 6:00 h the shift in this example will be allocated to Sunday.

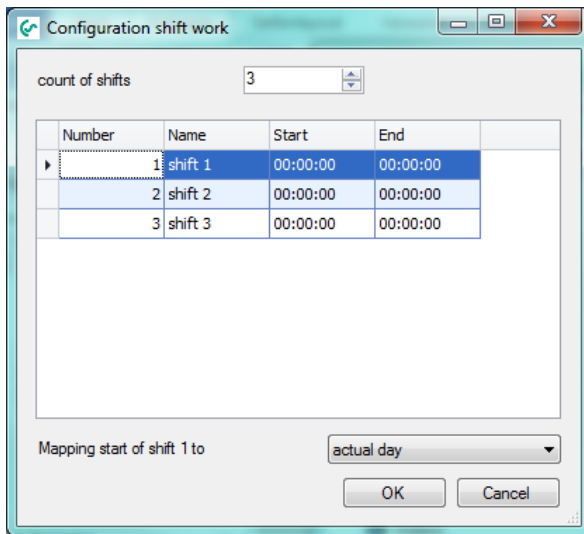


Illustration 2: Configuration shift work

- **Please observe - that devices which are located in a main or sum branch may not be included if a correct sum-calculation is to be performed. Additionally, in order to perform a correct sum calculation only consumption variables with the same unit may be included.**
- Depending on the selection of the TabControl a weekly, monthly or annual report is create.

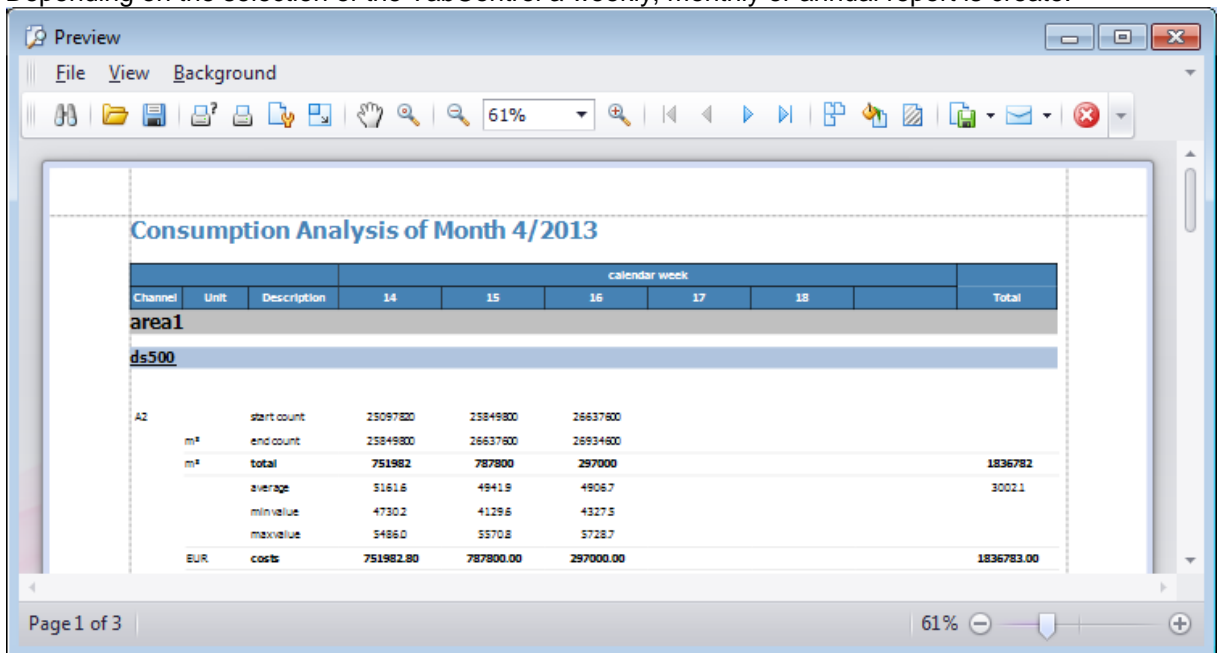


Illustration 28: Consumption Analysis

- The preview can be printed or exported as various types of documents (PDF, HTML, MHT, Rich Text, Excel, CSV, Text, graphically) via the menu "Export ...".

8 Alarm Configuration

- The alarm configuration can be called up in the "Overview" view via the device context menu "Alarm configuration".

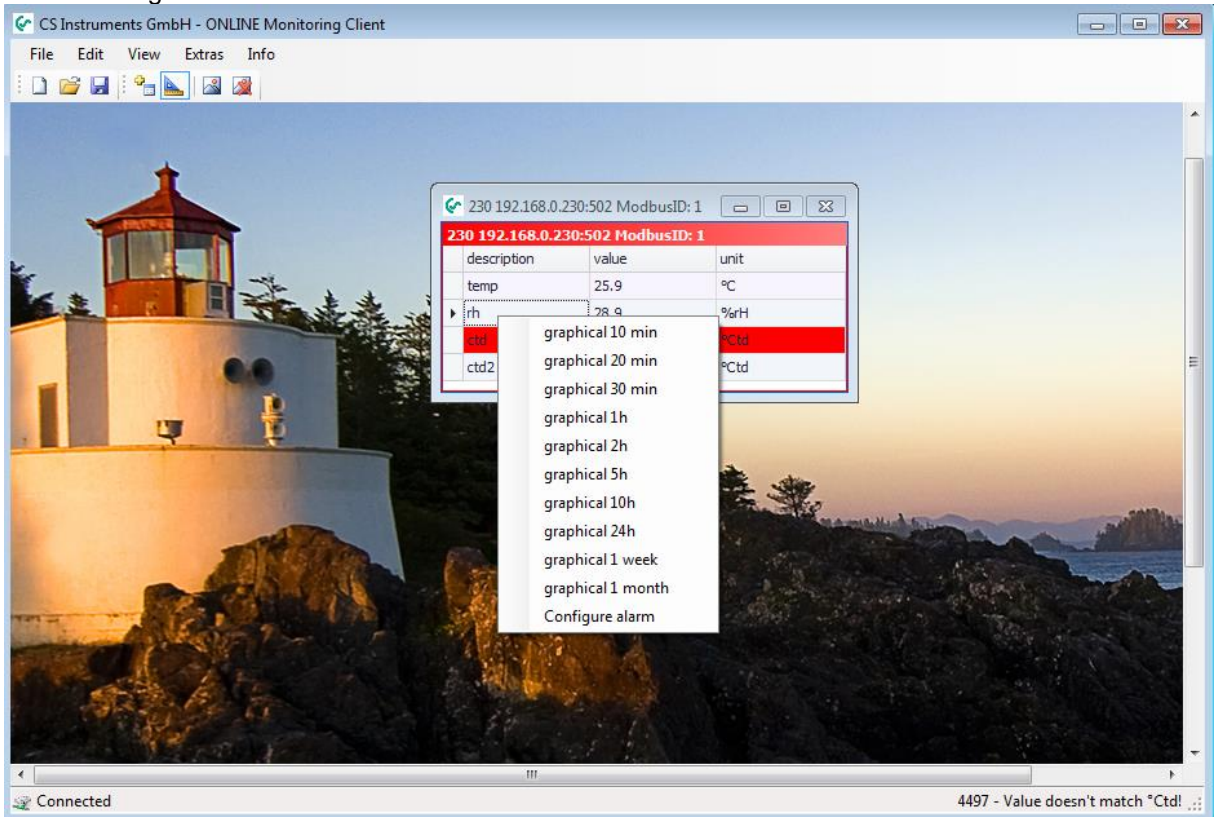


Illustration 29: Device context menu alarm configuration

- In addition, the alarm configuration can be executed from the context menu of the Diagram Explorer:

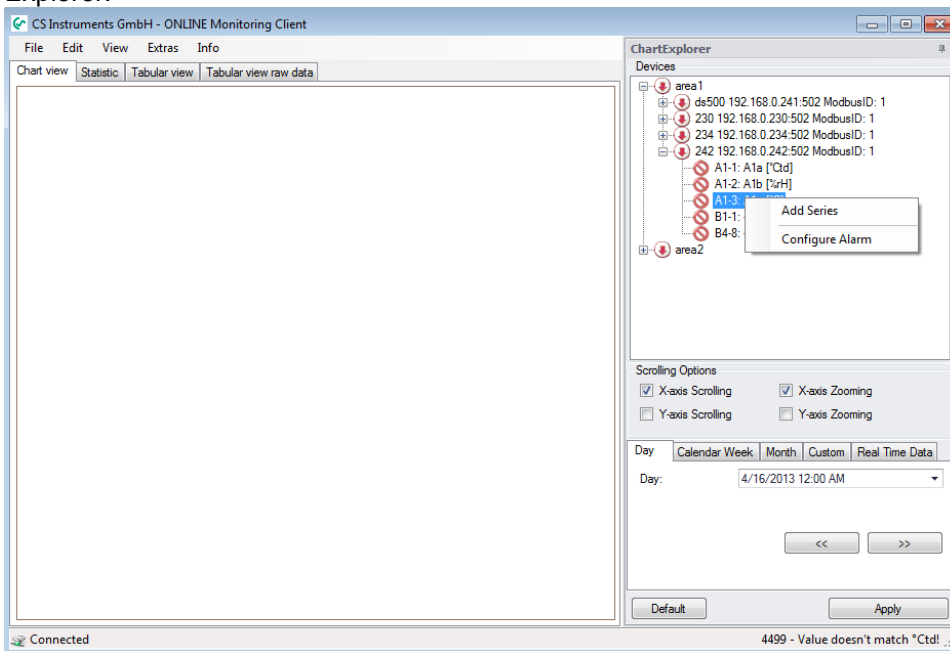


Illustration 30: Diagram Explorer Alarm Configuration

- 2 limit values can be set for each measured value. Depending on the definition the following variants are possible:
 A) pre-alarm + main-alarm
 B) lower limit + upper limit

For each alarm a switch-on delay and/or switch-off delay can be defined. An alarm text can be selected in the combo box "Alarm text". The definition of alarm texts is conducted either in the OMServerGUI or the OMClient (see 3.3.1 Alarm texts).

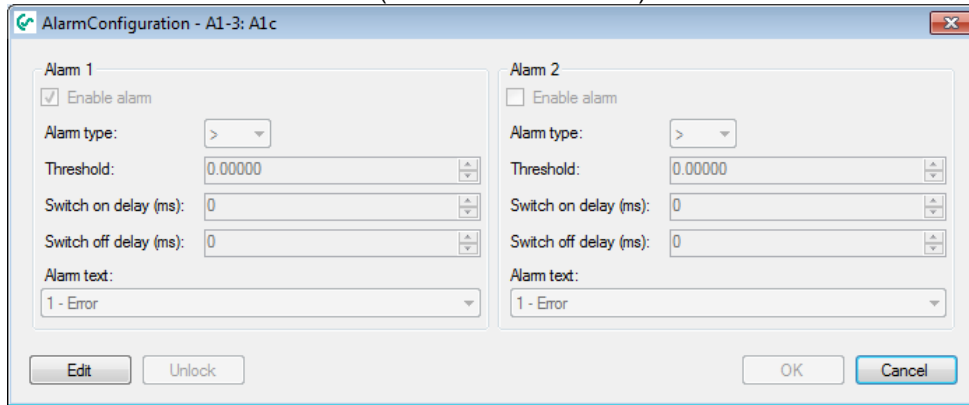


Illustration 31: Alarm configuration, pre-alarm - main-alarm

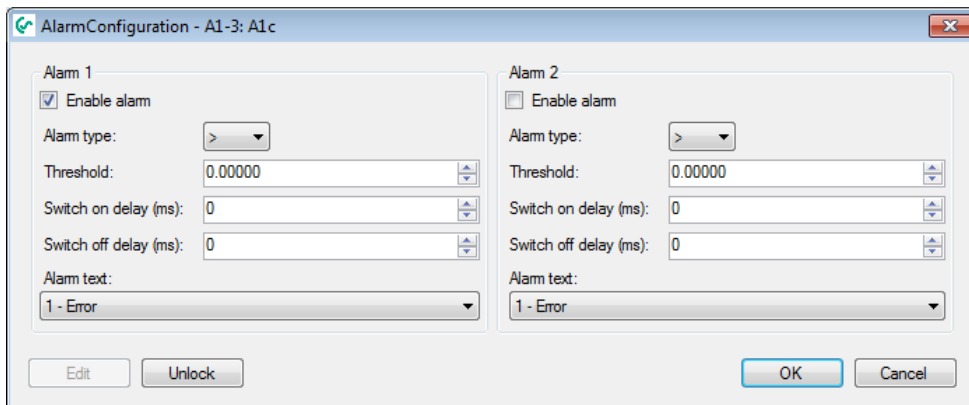


Illustration 32: Alarm configuration, lower/upper limit

9 Support and Service

If you have questions about our products or require technical support for the installation or use of our software, please contact us by e-mail:

info@cs-instruments.com

or by phone call:

+49 461 7002025

Phone support and Teamviewer access
(15 minutes = 30 Euro, minimum 45min)

We will answer all inquiries within 24-48 hours.