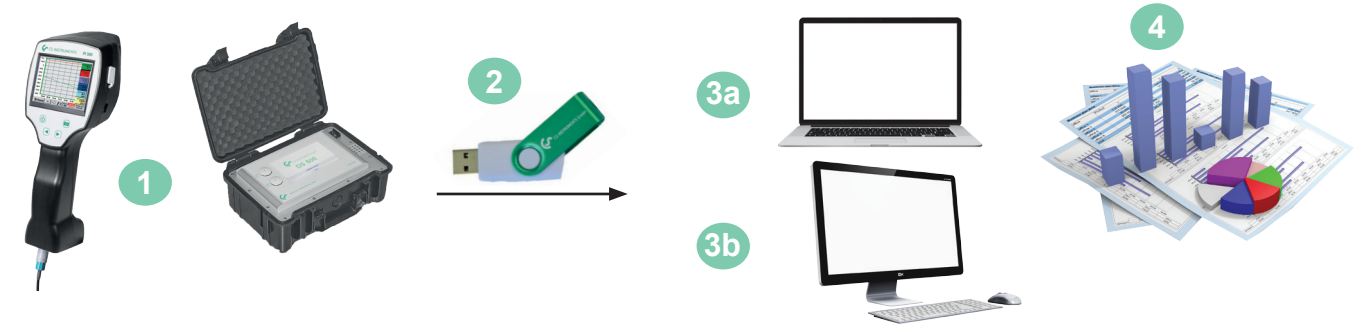




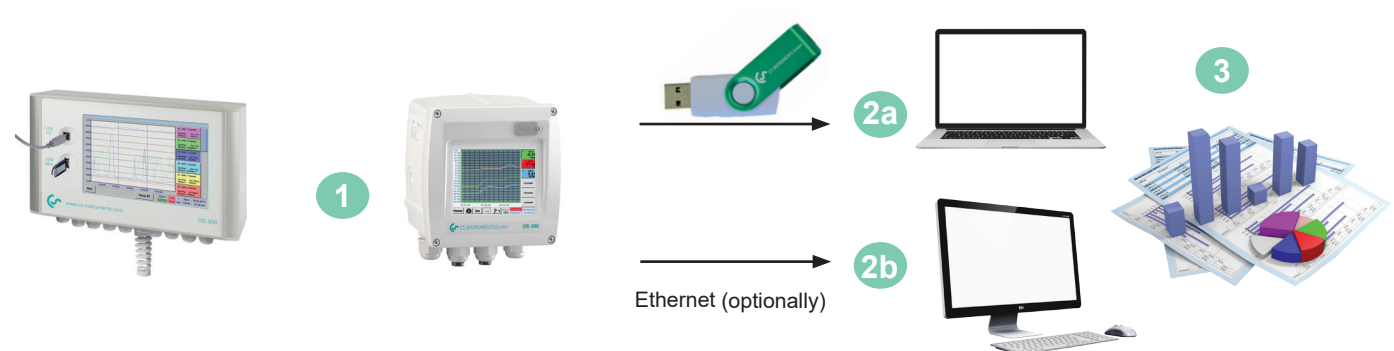
CS Basic 2018

Data evaluation in case of mobile measurement:



- 1 Mobile measurement at the customer. Measured data are saved in the data logger in the selected measuring cycle
- 2 Export of the data to the USB stick
- 3a Import of the measured data to the laptop directly on-site
- 3b Import of the measured data to the computer in the office
- 4 Evaluation and print out of the measured data

Data evaluation in case fix installed chart recorder in the company:

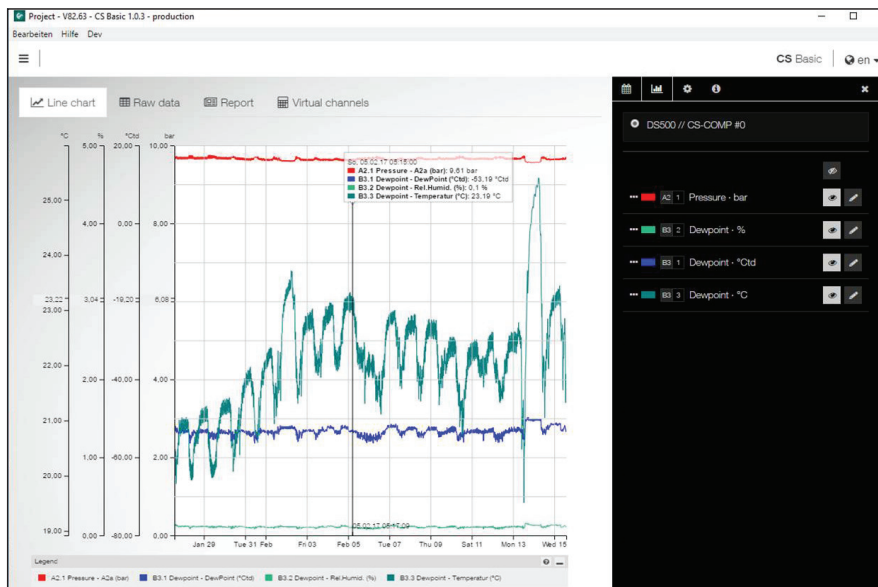
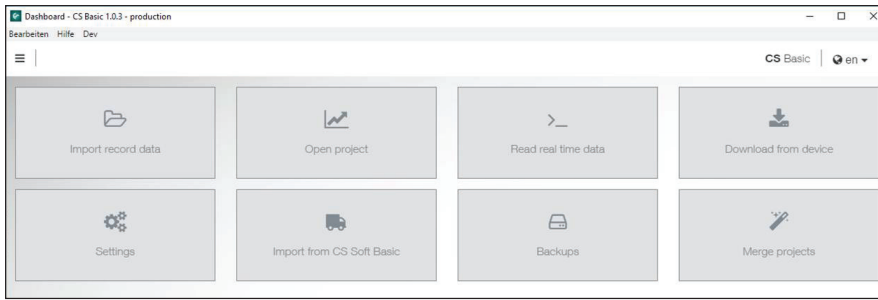


- 1 Chart recorder is fix installed in the company. Measured data will be saved in the data logger in the selected measurement cycle
- 2a Transfer the data via USB stick to the computer
- 2b Readout of the logger data via the computer network (LAN) by means of CS Basic
- 3 Evaluation and print out of the measured data

Description	Order. no
CS Basic - data evaluation in graphic and table form - readout of the measured data via USB or Ethernet. License for 2 working places	0554 8040
Additional license for 1 further working place	Z554 8040
Module „Formula Editor“ – by means of the formula editor the measured data and constants can be calculated (addition, subtraction, division, multiplication, root function, exponentiation)	Z554 8010
Upgrade CS Soft Basic (0554 7040) to CS Basic 2018 (0554 8040). CAA module is not available any more. Please state old license key when ordering	Z554 8041



CS Basic



Date	Device	A2.1	B3.1	B3.2	B3.3
		Pressure A2a bar	Dewpoint DewPoint °Ctd	Rel.Humid. %	Temperatur °C
27.01.17 13:52:18	0	9,6749	-50,6462	0,1534	20,2556
27.01.17 13:52:28	0	9,676	-51,4187	0,1394	20,2517
27.01.17 13:52:38	0	9,6769	-52,0952	0,128	20,2499
27.01.17 13:52:48	0	9,678	-52,791	0,1173	20,2479

Channel	Average	Minimum	Date of minimum	Maximum	Date of maximum
A2.1 Pressure - A2a (bar)	9,6518 bar	9,61 bar	13.02.17 13:29:48	9,8361 bar	13.02.17 13:23:08
B3.2 Dewpoint - Rel.Humid. (%)	0,1094 %	0,0895 %	13.02.17 14:40:28	0,4118 %	13.02.17 14:30:08
B3.1 Dewpoint - DewPoint (°Ctd)	-53,2784 °Ctd	-57,9552 °Ctd	27.01.17 13:54:38	-41,6251 °Ctd	13.02.17 14:38:08
B3.3 Dewpoint - Temperatur (°C)	22,0708 °C	24,9049 °C	14.02.17 06:19:28	26,0402 °C	14.02.17 06:25:38

	January	February	March	April	May	June	July	August	September	October	November	December	Sum	
A1.2 Verbrauch Halle 1 - A1b (m³)	Start (m³)	1.958.827	2.076.325	2.215.062	2.368.464	2.514.612	2.666.480	2.826.483	3.002.938	3.169.484	3.318.642	3.491.661	3.659.617	
	End (m³)	2.076.325	2.215.062	2.368.464	2.514.612	2.666.480	2.826.483	3.002.938	3.169.484	3.318.642	3.491.661	3.659.617	3.775.973	
	Consumption (m³)	117.498	138.737	153.402	148.148	151.868	180.003	178.455	166.546	149.158	173.019	167.956	118.356	1.817.146
	Cost (€)	2.232,46	2.636,00	2.914,64	2.776,81	2.885,49	3.040,06	3.352,65	3.164,37	2.834,00	3.267,36	3.191,16	2.210,76	34.525,774
A1.1 Verbrauch Halle 1 - A1a (m³/h)	Minimum (m³/h)	0	6,3	0	0	0	1,36	0	0	0	0	0	0	
	Average (m³/h)	157,6	205,98	205,8	202,54	203,52	221,66	236,5	223,25	206,67	232,19	232,67	155,99	
	Maximum (m³/h)	1.080,36	527,02	736,39	1.154	662,43	618,27	617,9	636,36	931,06	642,96	689,77	2.410,71	

Intuitive operation

All important functions can be retrieved via the dashboard.

- Global Settings: Adjust units and change decimal places, store company name and logo
- Import real-time data: Establish Ethernet connection to CS logger or sensor. Trace real-time measured data in graphic and in table form
- Import from CS Soft Basic: Data migration from the previous version of CS Soft Basic
- Data backup: Backup of the projects and the database

Grafic evaluation

All measurement curves are indicated in terms of color. All necessary functions like free zoom, selection/deselection of single measured curves, free selection of periods, scaling of the axes, selection of colors and soon are integrated:

This view can be stored as pdf file and sent by e-mail. Different data can be merged to one common file.

Table view

All measuring points are listed with the exact time interval. The desired measuring channels with the measuring site name can be selected via the diagram explorer.

Statistics

All necessary statistics data are apparent at a glance. So the user can quickly see which minimum or maximum measured values occurred at which time and for how long.

Flow evaluation

The software carries out flow analysis for all connected flow sensors optionally as daily, weekly or monthly report.